

## D-SUB SPECIFICATIONS

### MATERIALS

Shell: Yellow chromate or tin plated steel  
 Contacts: Male - Brass (gold plated over nickel)  
 Female - Gold plated phosphor bronze  
 Insulator: PBT & glass-fibre reinforced UL94V-0

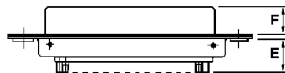
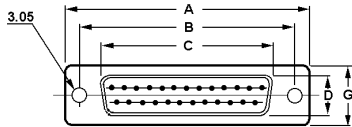
### ELECTRICAL

Current rating: 3 amps  
 Working voltage: 125V RMS  
 Dielectric strength: 1000 volts for 1 minute  
 Insulation resistance: 1000MΩ @ 500VDC  
 Temperature range: -55 to +105 degrees C

### MALE



- 30-110-0** 9-position
  - 30-111-0** 15-position
  - 30-112-0** 25-position
  - 30-113-0** 37-position
  - 30-114-0** 50-position
- Use -1 for Display Package*



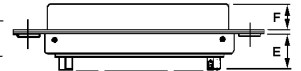
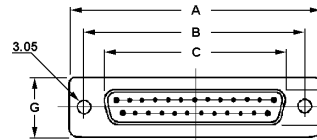
Size	A	B	C	D	E	F	G
9-pin	30.80	25.00	16.92	8.30	8.0	1.2	12.5
15-pin	39.20	33.30	25.25	8.30	8.0	1.2	12.5
25-pin	53.10	47.10	38.96	8.30	8.0	1.2	12.5
37-pin	69.40	63.50	55.42	8.30	8.0	1.2	12.5
50-pin	67.00	61.00	52.81	11.30	8.0	1.2	15.3

### SOLDER D-SUB CONNECTORS



### FEMALE

- 30-120-0** 9-position
  - 30-121-0** 15-position
  - 30-122-0** 25-position
  - 30-123-0** 37-position
  - 30-124-0** 50-position
- Use -1 for Display Package*

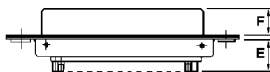
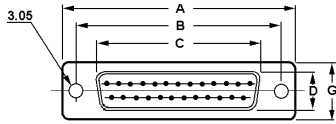


Size	A	B	C	D	E	F	G
9-pin	30.80	25.00	16.30	7.90	8.0	1.2	12.5
15-pin	39.20	33.30	24.60	7.90	8.0	1.2	12.5
25-pin	53.10	47.10	38.30	7.90	8.0	1.2	12.5
37-pin	69.40	63.50	54.80	7.90	8.0	1.2	12.5
50-pin	67.00	61.00	52.20	10.90	8.0	1.2	15.3

### MALE



- 30-140-0** 9-position
  - 30-141-0** 15-position
  - 30-142-0** 25-position
  - 30-143-0** 37-position
  - 30-144-0** 50-position
- Use -1 for Display Package*



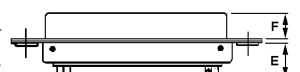
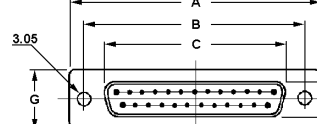
Size	A	B	C	D	E	F	G
9-pin	30.80	25.00	16.92	8.30	8.0	1.2	12.5
15-pin	39.20	33.30	25.25	8.30	8.0	1.2	12.5
25-pin	53.10	47.10	38.96	8.30	8.0	1.2	12.5
37-pin	69.40	63.50	55.42	8.30	8.0	1.2	12.5
50-pin	67.00	61.00	52.81	11.30	8.0	1.2	15.3

### MACHINED CONTACT D-SUB CONNECTORS



### FEMALE

- 30-150-0** 9-position
  - 30-151-0** 15-position
  - 30-152-0** 25-position
  - 30-153-0** 37-position
  - 30-154-0** 50-position
- Use -1 for Display Package*

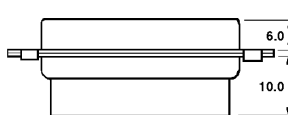
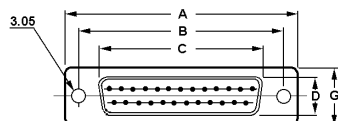


Size	A	B	C	D	E	F	G
9-pin	30.80	25.00	16.30	7.90	8.0	1.2	12.5
15-pin	39.20	33.30	24.60	7.90	8.0	1.2	12.5
25-pin	53.10	47.10	38.30	7.90	8.0	1.2	12.5
37-pin	69.40	63.50	54.80	7.90	8.0	1.2	12.5
50-pin	67.00	61.00	52.20	10.90	8.0	1.2	15.3

### MALE



- 30-210-0** 9-position
  - 30-211-0** 15-position
  - 30-212-0** 25-position
  - 30-213-0** 37-position
  - 30-214-0** 50-position
- Display package (-1) contains connector body plus contacts*



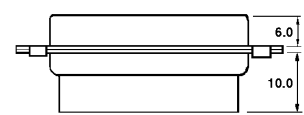
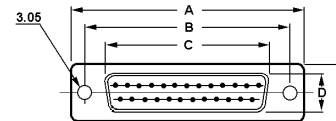
Size	A	B	C	D	G
9-pin	30.80	25.00	16.92	8.30	12.5
15-pin	39.20	33.30	25.25	8.30	12.5
25-pin	53.10	47.10	38.96	8.30	12.5
37-pin	69.40	63.50	55.42	8.30	12.5
50-pin	67.00	61.00	52.81	11.30	15.3

### CRIMP D-SUB CONNECTORS



### FEMALE

- 30-220-0** 9-position
  - 30-221-0** 15-position
  - 30-222-0** 25-position
  - 30-223-0** 37-position
  - 30-224-0** 50-position
- Display package (-1) contains connector body plus contacts*



Size	A	B	C	D	G
9-pin	30.80	25.00	16.30	7.90	12.5
15-pin	39.20	33.30	24.60	7.90	12.5
25-pin	53.10	47.10	38.30	7.90	12.5
37-pin	69.40	63.50	54.80	7.90	12.5
50-pin	67.00	61.00	52.81	10.90	15.3

**D-SUB CRIMP CONTACTS**

Contacts for 30-21X and 30-22X series on previous page.

Gold plated D-sub contacts. Available loose or on 5,000 pce. reels for machine application. Suitable for 20-24 AWG wire size.

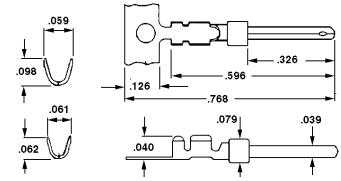


**30-226-0**  
**30-227-0**

Male contacts (loose)  
Male contacts (5,000 reel)

**30-228-0**  
**30-229-0**

Female contacts (loose)  
Female contacts (5,000 reel)



**FEMALE LOCK POSTS**

**D-SUB ACCESSORIES**

**MALE LOCK SCREWS**



Locking hardware c/w nuts & washers (set of two)

**30-023-0** Bulk only



Locking screws c/w clip-on captivators (set of two)

**30-028-0** Bulk only

**MALE LOCK POSTS**



Knurled lock posts - use with hoods (set 2)

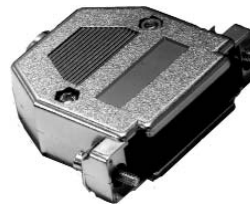
**30-030-0** Bulk only

**D-SUB HOODS**

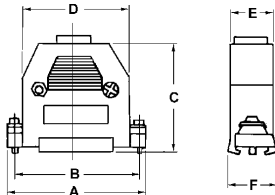
Grey plastic D-sub hoods complete with all hardware

Chrome plated plastic D-sub hoods for EMI/RFI shielding

- 30-130-0** 9-position
  - 30-131-0** 15-position
  - 30-132-0** 25-position
  - 30-133-0** 37-position
  - 30-134-0** 50-position
- Use -1 for Display Package



- 30-230-0** 9-position
  - 30-231-0** 15-position
  - 30-232-0** 25-position
  - 30-233-0** 37-position
  - 30-234-0** 50-position
- Use -1 for Display Package



Size	A	B	C	D	E	F
9-pin	31.00	24.99	39.50	20.50	16.0	16.0
15-pin	39.00	33.52	35.50	28.00	16.0	16.0
25-pin	53.20	47.04	41.00	37.00	18.5	18.5
37-pin	72.00	63.50	42.00	51.00	23.0	23.0
50-pin	69.10	61.11	44.00	54.10	23.0	23.0

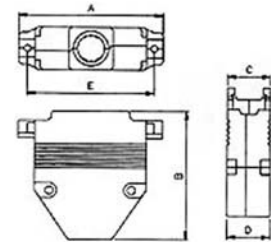


Die Cast Metal D-sub hoods complete with all hardware

- 30-230M-0** 9-position
  - 30-231M-0** 15-position
  - 30-232M-0** 25-position
- Use -1 for Display Package

**New Item**

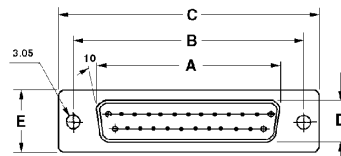
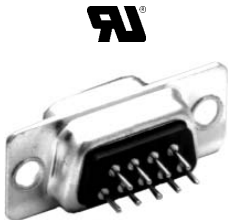
Size	A	B	C	D	E
9-pin	31.00	47.00	15.60	15.80	24.99
15-pin	40.00	48.00	15.80	15.80	33.32
25-pin	53.50	48.00	16.00	16.00	47.04



**PRINTED CIRCUIT MOUNT D-SUBS**

**MALE**

- 30-310-0** 9-position
  - 30-311-0** 15-position
  - 30-312-0** 25-position
  - 30-313-0** 37-position
  - 30-314-0** 50-position
- Use -1 for Display Package

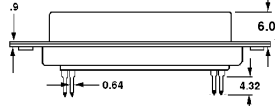


**MALE**

Size	A	B	C	D	E
9-pin	16.92	25.00	30.80	8.30	12.5
15-pin	25.25	33.30	39.20	8.30	12.5
25-pin	39.96	47.10	53.10	8.30	12.5
37-pin	55.42	63.50	69.40	8.30	12.5
50-pin	52.81	61.00	67.00	11.30	15.3

**FEMALE**

- 30-320-0** 9-position
  - 30-321-0** 15-position
  - 30-322-0** 25-position
  - 30-323-0** 37-position
  - 30-324-0** 50-position
- Use -1 for Display Package



**FEMALE**

Size	A	B	C	D	E
9-pin	16.30	25.00	30.80	7.90	12.5
15-pin	24.60	33.30	39.20	7.90	12.5
25-pin	38.30	47.10	53.10	7.90	12.5
37-pin	54.80	63.50	69.40	7.90	12.5
50-pin	52.20	61.00	67.00	10.9	15.3

## MALE



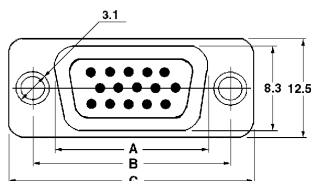
Size	A	B	C
15-pin	16.92	25.00	30.80
26-pin	25.25	33.30	39.20
44-pin	38.96	47.10	53.10



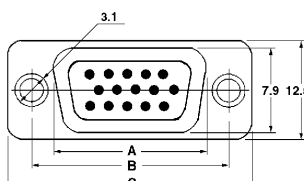
## HIGH DENSITY SOLDER D-SUBS



**30-810-0** 15-position  
**30-811-0** 26-position  
**30-812-0** 44-position  
*Use -1 for Display Package*



**30-820-0** 15-position  
**30-821-0** 26-position  
**30-822-0** 44-position  
*Use -1 for Display Package*

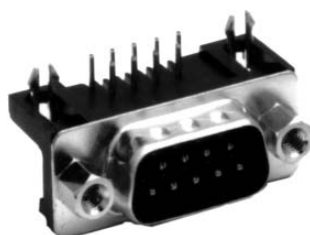


## FEMALE



Size	A	B	C
15-pin	16.30	25.00	30.80
26-pin	24.60	33.30	39.20
44-pin	38.30	47.10	53.10

## MALE



Size	A	B	C
9-pin	16.92	25.00	30.80
15-pin	25.25	33.30	39.20
25-pin	38.60	47.10	53.10
37-pin	55.42	63.50	69.4

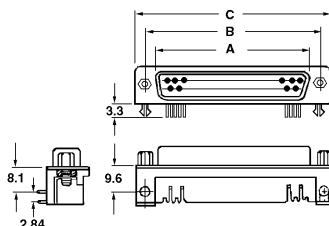


## RIGHT ANGLE P.C. MOUNT D-SUB

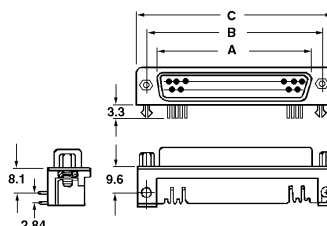


*.318"/8.1mm footprint*

**30-410-0** 9-position  
**30-411-0** 15-position  
**30-412-0** 25-position  
**30-413-0** 37-position  
*Use -1 for Display Package*



**30-420-0** 9-position  
**30-421-0** 15-position  
**30-422-0** 25-position  
**30-423-0** 37-position  
*Use -1 for Display Package*

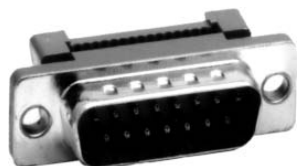


## FEMALE



Size	A	B	C
9-pin	16.30	25.00	30.80
15-pin	24.60	33.30	39.20
25-pin	38.30	47.10	53.10
37-pin	54.80	63.50	69.4

## MALE



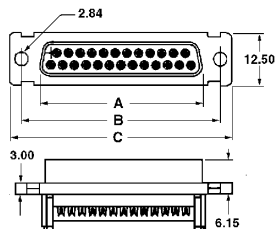
Size	A	B	C
9-pin	16.92	25.00	30.80
15-pin	25.25	33.30	39.20
25-pin	38.60	47.10	53.10
37-pin	55.42	63.50	69.4



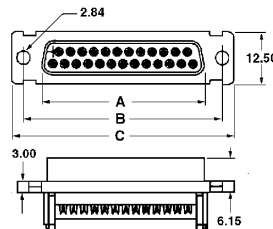
## RIBBON CABLE D-SUBS



**30-710-0** 9-position  
**30-711-0** 15-position  
**30-712-0** 25-position  
**30-713-0** 37-position  
*Use -1 for Display Package*



**30-720-0** 9-position  
**30-721-0** 15-position  
**30-722-0** 25-position  
**30-723-0** 37-position  
*Use -1 for Display Package*

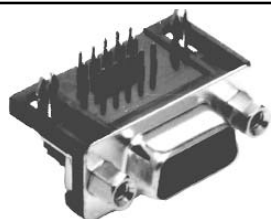


## FEMALE



Size	A	B	C
9-pin	16.30	25.00	30.80
15-pin	24.60	33.30	39.20
25-pin	38.30	47.10	53.10
37-pin	54.80	63.50	69.4

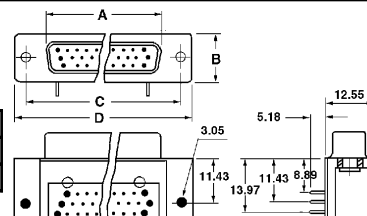
## HIGH DENSITY R/A P.C. MOUNT D-SUBS (FEMALE)



**30-860-0** 15-position  
**30-861-0** 26-position  
*Use -1 for Display Package*



Size	A	B	C	D
15-pin	16.30	12.5	25.00	30.80
26-pin	24.60	12.5	33.30	39.20



## CABLE PLUGS

**30-902-0** 36-position  
**30-903-0** 50-position  
*Use -1 for Display Package*



## CENTRONICS CONNECTORS



## RIBBON CABLE PLUGS

**30-942-0** 36-position  
**30-943-0** 50-position  
*Use -1 for Display Package*



## RIBBON CABLE RECEPTACLES

**30-946-0** 36-position  
**30-947-0** 50-position  
*Use -1 for Display Package*